

Conical

Cónicos

Konisch

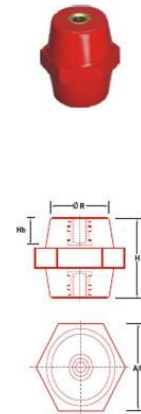
Height Altura / Höhe (H) mm	Insert Relleno / Einsatz	POWERMAT code / código	Dimension / Dimensión / Maß			Nominal Voltage / Voltaje Nominal / Nennspannung (AC / DC)
			Rt Ø mm	Rb Ø mm	Hb mm	
25	M 6	C 625 (M6)	19	25	10	400 / 500
30	M 6	C 630 (M6)	25	30	10	600 / 750
30	M 8	C 830 (M8)	25	30	12	600 / 750
40	M 8	C 840 (M8)	33	40	15	1000 / 1200
40	M 10	C 1040 (M10)	33	40	15	1000 / 1200
50	M 10	C 1050 (M10)	40	50	20	1200 / 1500
50	M 12	C 1250 (M12)	40	50	20	1200 / 1500
60	M 10	C 1060 (M10)	42	50	20	1500 / 1800
60	M 12	C 1260 (M12)	42	50	20	1500 / 1800
70	M 10	C 1070 (M10)	41	50	25	2000 / 2400
70	M 12	C 1270 (M12)	41	50	25	2000 / 2400

All Dimensions are in MM / Todas las dimensiones están en el milímetro / Alle Maße sind in Millimeter.

Insert : Brass / Steel (Zinc. Passivated) / Latón/Acero (Cinc. Apaciguado) / Messing/Stahl (Zink. Passiviert)

Material : DMC (Dough Moulding Compound) UL 94 V-0 (Halogen Free / Halógeno libremente / Halogen frei)

Standoff Insulators



Hexagonal

Hexagonal

Sechseckig

Height Altura / Höhe (H) mm	Insert Relleno / Einsatz	POWERMAT code / código	Dimension / Dimensión / Maß			Nominal Voltage / Voltaje Nominal / Nennspannung (AC / DC)
			A/F mm	R Ø mm	Hb mm	
20	M 4	H 420 (M4)	18	14	8	300 / 400
20	M 6	H 620 (M6)	18	14	8	300 / 400
25	M 6	H 625 (M6)	21	16	10	400 / 500
25	M 6	MH 625 (M6)	19	17	10	400 / 500
30	M 6	H 630 (M6)	33	25	10	600 / 750
30	M 8	H 830 (M8)	33	26	12	600 / 750
35	M 6	H 635 (M6)	33	26	10	600 / 750
35	M 8	H 835 (M8)	33	26	12	600 / 750
35	M 10	H 1035 (M10)	33	26	12	600 / 750
35	M 10	MH 1035 (M10)	41	33	15	600 / 750
40	M 8	H 840 (M8)	40	30	15	1000 / 1200
40	M 10	H 1040 (M10)	40	30	15	1000 / 1200
45	M 8	H 845 (M8)	40	32	15	1000 / 1200
45	M 10	H 1045 (M10)	40	32	15	1000 / 1200
50	M 10	H 1050 (M10)	46	37	20	1200 / 1500
50	M 12	H 1250 (M12)	46	37	20	1200 / 1500
60	M 10	H 1060 (M10)	50	38	20	1500 / 1800
60	M 12	H 1260 (M12)	50	38	20	1500 / 1800
65	M 10	H 1065 (M10)	55	41	25	1500 / 1800
65	M 12	H 1265 (M12)	55	41	20	1500 / 1800
70	M 10	H 1070 (M10)	55	41	25	2000 / 2400
70	M 12	H 1270 (M12)	55	41	30	2000 / 2400
75	M 10	H 1075 (M10)	55	42	25	2000 / 2400
75	M 12	H 1275 (M12)	55	42	30	2000 / 2400
76	M 10	H 1076E (M10)	50	33	25	2000 / 2400

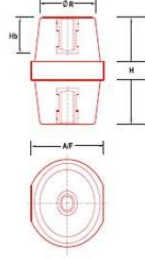
All Dimensions are in MM / Todas las dimensiones están en el milímetro / Alle Maße sind in Millimeter.

Insert : Brass / Steel (Zinc. Passivated) / Latón/Acero (Cinc. Apaciguado) / Messing/Stahl (Zink. Passiviert)

Material : DMC (Dough Moulding Compound) UL 94 V-0 (Halogen Free / Halógeno libremente / Halogen frei)

Standoff Insulators

Drum Tambor Trommel



Height Altura / Höhe (H) mm	Insert Relleño / Einsatz	POWERMAT code / código	Dimension / Dimensión / Maß			Nominal Voltage / Voltaje Nominal / Nennspannung (AC / DC)
			A/F mm	R Ø mm	Hb mm	
20	M 4	D 420 (M4)	18	14	8	300 / 400
20	M 6	D 620 (M6)	18	14	8	300 / 400
25	M 6	D 625 (M6)	21	16	10	400 / 500
30	M 6	D 630 (M6)	33	25	10	600 / 750
30	M 8	D 830 (M8)	33	26	12	600 / 750
35	M 6	D 635 (M6)	32	26	10	600 / 750
35	M 8	D 835 (M8)	32	26	12	600 / 750
35	M 10	D 1035 (M10)	32	26	12	600 / 750
40	M 8	D 840 (M8)	39	31	15	1000 / 1200
40	M 10	D 1040 (M10)	39	31	15	1000 / 1200
45	M 8	D 845 (M8)	41	32	15	1000 / 1200
45	M 10	D 1045 (M10)	41	32	15	1000 / 1200
50	M 10	D 1050 (M10)	48	37	20	1200 / 1500
50	M 12	D 1250 (M12)	48	37	20	1200 / 1500
51	M 8	D 851E (M8)	36	27	20	1000 / 1200
51	M10	D 1051E (M10)	36	27	20	1000 / 1200
60	M 10	D 1060 (M10)	52	38	20	1500 / 1800
60	M 12	D 1260 (M12)	52	38	20	1500 / 1800
65	M 10	D 1065 (M10)	55	41	25	1500 / 1800
65	M 12	D 1265 (M12)	55	41	20	1500 / 1800
70	M 10	D 1070 (M10)	55	41	25	2000 / 2400
70	M 12	D 1270 (M12)	55	41	30	2000 / 2400
75	M 10	D 1075 (M10)	55	42	25	2000 / 2400
75	M 12	D 1275 (M12)	55	42	30	2000 / 2400
76	M 10	D 1076E (M10)	50	34	25	2000 / 2400

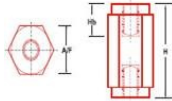
All Dimensions are in MM / Todas las dimensiones están en el milímetro / Alle Maße sind in Millimeter.

Insert : Brass / Steel (Zinc Passivated) Latón/Acero (Cinc. Apaciguado) Messing/Stahl (Zink Passiviert)

Material : DMC (Dough Moulding Compound) UL 94 V-0 (Halogen Free / Halógeno libremente / Halogen frei)

Standoff Insulators

Full Hex Tuerca hexagonal Completa Volles Hexagon



Height Altura / Höhe (H) mm	POWERMAT code / código	Hb (mm)	Nominal Voltage / Voltaje Nominal / Nennspannung (AC / DC)
-----------------------------------	---------------------------	------------	---

Height Altura / Höhe (H) mm	POWERMAT code / código	Hb (mm)	Nominal Voltage / Voltaje Nominal / Nennspannung (AC / DC)
-----------------------------------	---------------------------	------------	---

Hex Face to Face (A/F 14mm)

Insert M4				Insert M5			
15	14HH 415	5	100 / 200	15	14HH 515	5	100 / 200
20	14HH 420	7	300 / 400	20	14HH 520	7	300 / 400
25	14HH 425	10	400 / 500	25	14HH 525	10	400 / 500

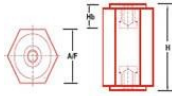
Hex Face to Face (A/F 20mm)

Insert M5				Insert M6			
20	20HH 520	7	300 / 400	20	20HH 620	7	300 / 400
25	20HH 525	10	400 / 500	25	20HH 625	10	400 / 500
30	20HH 530	10	600 / 750	30	20HH 630	10	600 / 750
35	20HH 535	10	600 / 750	35	20HH 635	10	600 / 750
40	20HH 540	15	1000 / 1200	40	20HH 640	15	1000 / 1200
45	20HH 545	15	1000 / 1200	45	20HH 645	15	1000 / 1200
50	20HH 550	20	1200 / 1500	50	20HH 650	20	1200 / 1500
55	20HH 555	20	1200 / 1500	55	20HH 655	20	1200 / 1500
60	20HH 560	20	1500 / 1800	60	20HH 660	20	1500 / 1800



Hex Face to Face (A/F 25mm)

Insert M6				Insert M8			
25	25HH 625	10	400 / 500	25	25HH 825	10	400 / 500
30	25HH 630	10	600 / 750	30	25HH 830	12	600 / 750
35	25HH 635	10	600 / 750	35	25HH 835	12	600 / 750
40	25HH 640	15	1000 / 1200	40	25HH 840	15	1000 / 1200
45	25HH 645	15	1000 / 1200	45	25HH 845	15	1000 / 1200
50	25HH 650	20	1200 / 1500	50	25HH 850	20	1200 / 1500
55	25HH 655	20	1200 / 1500	55	25HH 855	20	1200 / 1500
60	25HH 660	20	1500 / 1800	60	25HH 860	20	1500 / 1800



Hex Face to Face (A/F 35mm)

Insert M8				Insert M10			
30	35HH 830	12	600 / 750	30	35HH 1030	12	600 / 750
35	35HH 835	12	600 / 750	35	35HH 1035	12	600 / 750
40	35HH 840	15	1000 / 1200	40	35HH 1040	15	1000 / 1200
45	35HH 845	15	1000 / 1200	45	35HH 1045	15	1000 / 1200
50	35HH 850	20	1200 / 1500	50	35HH 1050	20	1200 / 1500
55	35HH 855	20	1200 / 1500	55	35HH 1055	20	1200 / 1500
60	35HH 860	20	1500 / 1800	60	35HH 1060	20	1500 / 1800

Hex Face to Face (A/F 45mm)

Insert M10				Insert M12			
35	45HH 1035	12	600 / 750	35	45HH 1235	12	600 / 750
40	45HH 1040	15	1000 / 1200	40	45HH 1240	15	1000 / 1200
45	45HH 1045	15	1000 / 1200	45	45HH 1245	15	1000 / 1200
50	45HH 1050	20	1200 / 1500	50	45HH 1250	20	1200 / 1500
55	45HH 1055	20	1200 / 1500	55	45HH 1255	20	1200 / 1500
60	45HH 1060	20	1500 / 1800	60	45HH 1260	20	1500 / 1800
70	45HH 1070	25	1500 / 1800	70	45HH 1270	20	1500 / 1800
80	45HH 1080	30	2000 / 2400	80	45HH 1280	30	2000 / 2400
90	45HH 1090	30	3400 / 4000	90	45HH 1290	30	3400 / 4000
100	45HH 10100	30	3400 / 4000	100	45HH 12100	30	3400 / 4000

All Dimensions are in MM / Todas las dimensiones están en el milímetro / Alle Maße sind in Millimeter.

Insert : Brass / Steel (Zinc Passivated) Latón/Acero (Cinc. Apaciguado) Messing/Stahl (Zink. Passiviert)

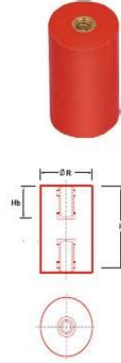
Material : DMC (Dough Moulding Compound) UL 94 V-0 (Halogen Free / Halógeno libremente / Halogen frei)

Standoff Insulators

Cylindrical

Cilindrico

Zylinderförmig



Height Altura / Höhe (H) mm	Insert Relleño / Einsatz	POWERMAT code / código	Dimension / Dimensión / Maß	Nominal Voltage / Voltaje Nominal / Nennspannung (AC / DC)		
			A/F mm	R Ø mm	Hb mm	
25	M 6	CY 2225 (M6)	—	22	10	400 / 500
25	M 8	CY 2225 (M8)	—	22	10	400 / 500
30	M 6	CY 2630 (M6)	—	26	10	600 / 750
30	M 6	CY 2630 (M6)	—	26	10	600 / 750
30	M 6	CY 3030 (M6)	—	30	10	600 / 750
30	M 8	CY 3030 (M8)	—	30	12	600 / 750
30	M 10	CY 3030 (M10)	—	30	12	600 / 750
40	M 6	CY 3040 (M6)	—	30	15	1000 / 1200
40	M 8	CY 3040 (M8)	—	30	15	1000 / 1200
40	M 10	CY 3040 (M10)	—	30	15	1000 / 1200
40	M 8	CY 4040 (M8)	—	40	15	1000 / 1200
40	M 10	CY 4040 (M10)	—	40	15	1000 / 1200
50	M 6	CY 3050 (M6)	—	30	20	1200 / 1500
50	M 8	CY 3050 (M8)	—	30	20	1200 / 1500
50	M 10	CY 3050 (M10)	—	30	20	1200 / 1500
50	M 8	CY 4050 (M8)	—	40	20	1200 / 1500
50	M 10	CY 4050 (M10)	—	40	20	1200 / 1500
50	M 10	CY 5050 (M10)	—	50	20	1200 / 1500
50	M 12	CY 5050 (M12)	—	50	20	1200 / 1500
60	M 6	CY 2660 (M6)	—	26	20	1500 / 1800
60	M 8	CY 2660 (M8)	—	26	20	1500 / 1800
60	M 10	CY 2660 (M10)	—	26	20	1500 / 1800
60	M 6	CY 3060 (M6)	—	30	20	1500 / 1800
60	M 8	CY 3060 (M8)	—	30	20	1500 / 1800
60	M 10	CY 3060 (M10)	—	30	20	1500 / 1800
60	M 10	CY 5060 (M10)	—	50	20	1500 / 1800
60	M 12	CY 5060 (M12)	—	50	20	1500 / 1800
60	M 10	CY 6060 (M10)	—	60	20	1500 / 1800
60	M 12	CY 6060 (M12)	—	60	20	1500 / 1800
63	M 6	CY 2663 (M6)	—	26	20	1500 / 1800
63	M 8	CY 2663 (M8)	—	26	20	1500 / 1800
63	M 10	CY 2663 (M10)	—	26	20	1500 / 1800

All Dimensions are in MM / Todas las dimensiones están en el milímetro / Alle Maße sind in Millimeter.

Insert : Brass / Steel (Zinc, Passivated) Latón/Acero (Zinc, Apaciguado) Messing/Stahl (Zink, Passiviert)

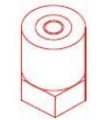
Material : DMC (Dough Moulding Compound) UL 94 V-0 (Halogen Free / Halógeno libremente / Halogen frei)

Standoff Insulators

Round Hex

Tuerca hexagonal Redonda

Rundes Hexagon



Height Altura / Höhe (H) mm	POWERMAT code / código	Hb (mm)	Nominal Voltage / Voltaje Nominal / Nennspannung (AC / DC)	Height Altura / Höhe (H) mm	POWERMAT code / código	Hb (mm)	Nominal Voltage / Voltaje Nominal / Nennspannung (AC / DC)
-----------------------------------	---------------------------	------------	---	-----------------------------------	---------------------------	------------	---

Insert M5				Round & Hex Face to Face (A/F 20mm)				Insert M6			
20	20RH 520	7	300 / 400	20	20RH 620	7	300 / 400	25	20RH 625	10	400 / 500

Insert M8				Round & Hex Face to Face (A/F 30mm)				Insert M10			
30	30RH 830	12	600 / 750	30	30RH 1030	12	600 / 750	35	30RH 1035	12	600 / 750
40	30RH 840	15	1000 / 1200	40	30RH 1040	15	1000 / 1200				

Insert M10				Round & Hex Face to Face (A/F 40mm)				Insert M12			
30	40RH 1030	12	600 / 750	40	40RH 1240	15	1000 / 1200	45	40RH 1245	15	1000 / 1200
40	40RH 1040	15	1000 / 1200	50	40RH 1250	20	1200 / 1500	55	40RH 1255	20	1200 / 1500
45	40RH 1045	15	1000 / 1200	60	40RH 1260	20	1500 / 1800	65	40RH 1265	20	1500 / 1800
50	40RH 1050	20	1200 / 1500	70	40RH 1270	20	1500 / 1800				
55	40RH 1055	20	1200 / 1500								
60	40RH 1060	20	1500 / 1800								
65	40RH 1065	25	1500 / 1800								
70	40RH 1070	25	2000 / 2400								

Insert M12				Round & Hex Face to Face (A/F 60mm)				Insert M16			
40	60RH 1240	15	1000 / 1200	50	60RH 1650	20	1200 / 1500	60	60RH 1660	20	1500 / 1800
50	60RH 1250	20	1200 / 1500	60	60RH 1660	20	1500 / 1800	70	60RH 1670	20	1500 / 1800
60	60RH 1260	20	1500 / 1800	70	60RH 1670	20	1500 / 1800	80	60RH 1680	30	2000 / 2400
70	60RH 1270	20	1500 / 1800								
80	60RH 1280	30	1500 / 1800								

All Dimensions are in MM / Todas las dimensiones están en el milímetro / Alle Maße sind in Millimeter.

Insert : Brass / Steel (Zinc, Passivated) Latón/Acero (Zinc, Apaciguado) Messing/Stahl (Zink, Passiviert)

Material : DMC (Dough Moulding Compound) UL 94 V-0 (Halogen Free / Halógeno libremente / Halogen frei)